

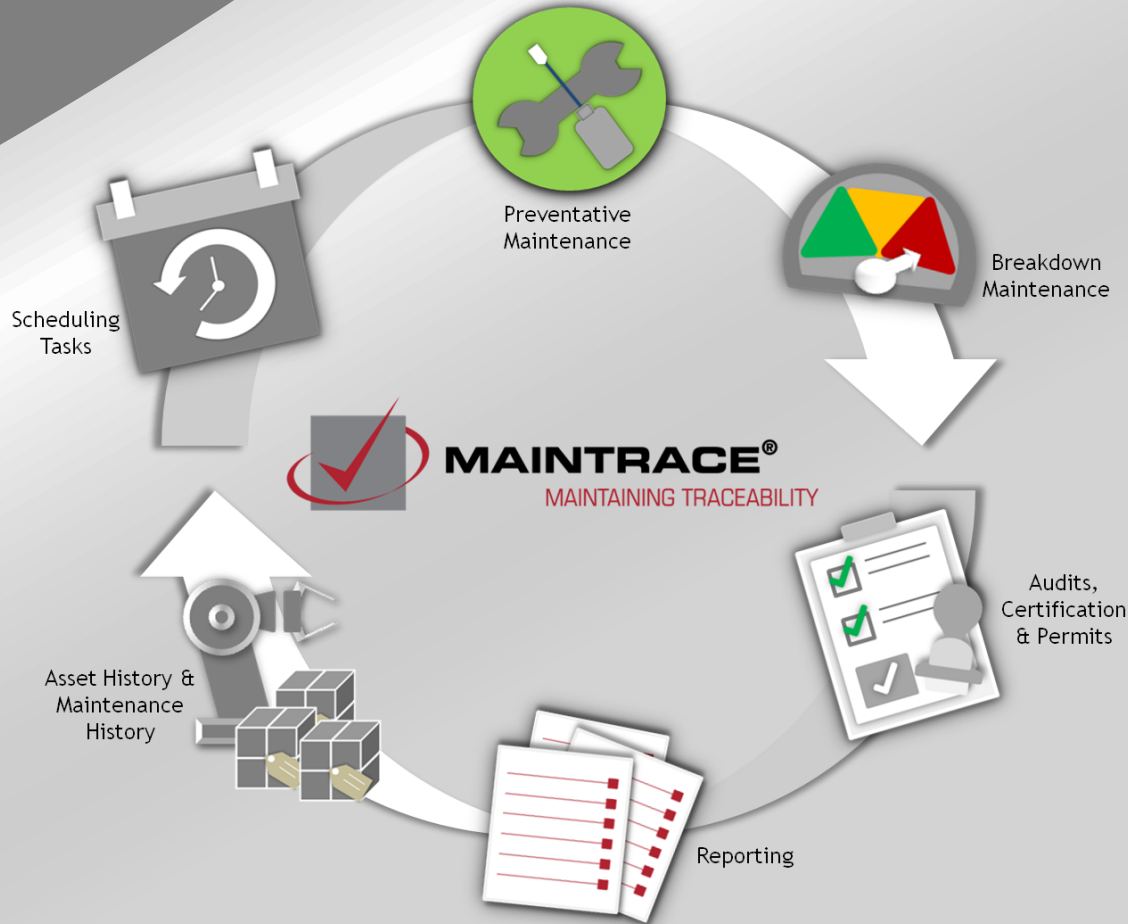


MAINTRACE®

MAINTAINING TRACEABILITY

Total asset life-cycle and total cost of ownership are available at the touch of a button.





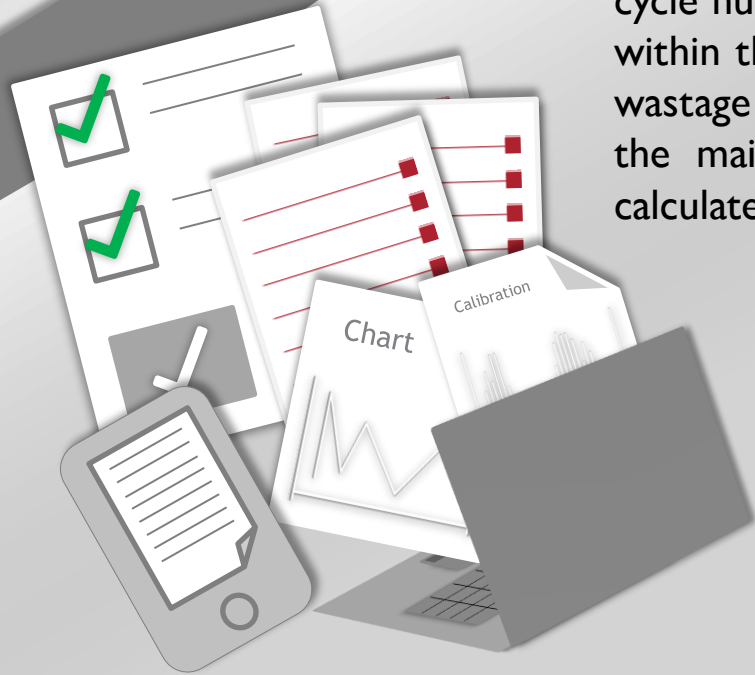
Maintrace® is a Computerised Maintenance Management System (CMMS) that is designed to simplify and improve the Maintenance and Traceability of your process plant assets and equipment.

It covers the calibration of instruments and logs the entire asset history.

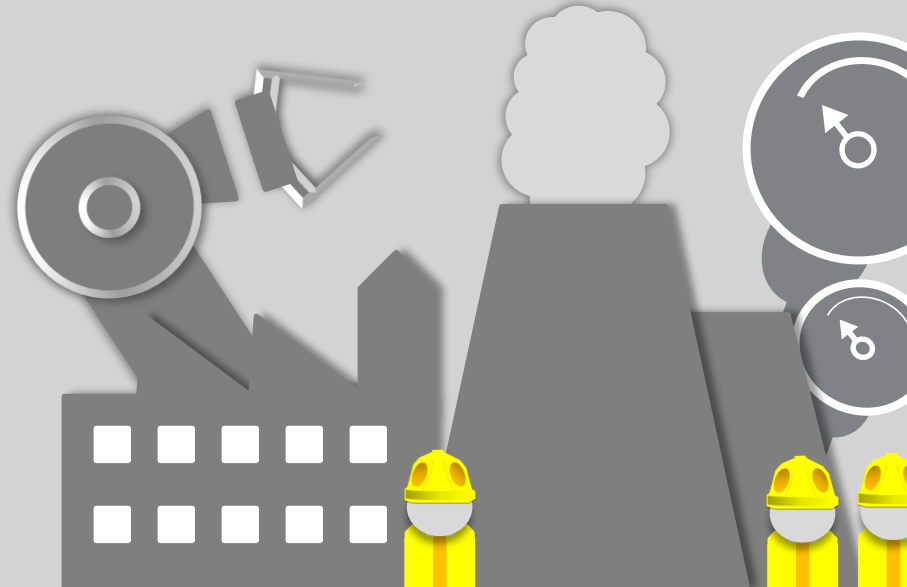
Keeping it all
secure on the
cloud



Every physical asset goes through a life-cycle beginning with its conception and ending at its disposal. In every phase of the life-cycle numerous errors and mistakes can occur that leave defects within the asset to eventually leading to breakdowns, losses and wastage during operation. Our CMMS allows you to schedule the maintenance tasks of your assets and can automatically calculate the recommended maintenance intervals.



Maintrace® is operated through any simple web browser making it accessible from any internet ready device so you can access your documents digitally.





Time and financial resource reports are able to be generated based on individual assets and plant areas. You are able to produce and store all calibration records for your assets eliminating the need to adopt complicated filing and record keeping of numerous paper documents – *previous maintenance and calibration history is available at the click of a button saving you time locating paper documents during audit periods.*





www.shpautomation.com

